

VWR® CONTOUR SEATING COLLECTION

Exceptional Performance

Ergonomic Comfort

Perfect for Healthcare,
Lab, Critical and Office
Environments



VWR® CONTOUR™
SEATING COLLECTIONS

VWR is proud to offer the Contour™ line of chairs, stools, and footrests. Featuring adjustable-height chairs and stools for labs, offices, critical environments and healthcare, VWR has the seating furniture you need. From our Mesh Back chair and standard lab chairs and stools to the Vacuum-Formed line and our Class 100 cleanroom chairs, our products will give your workers plenty of comfort and support.



CONTENTS

Mesh Back Chairs 7

Office Chairs - CAL 133 & Upholstered 8

Office Chairs - Upholstered 9

Deluxe Lab Chairs with Arms 10

Deluxe Lab Chairs 11

Upholstered Lab Chairs 12

Upholstered Stools 13

Deluxe FFAC Lab Chairs with Arms 14

Deluxe FFAC Lab Chairs 15

Deluxe CAL 133 Lab Chairs with Arms 16

Deluxe CAL 133 Lab Chairs 17

Upholstered CAL 133 Lab Chairs 18

Upholstered CAL 133 Stools 19

Self-Skinned Urethane Chairs 20

Self-Skinned Urethane Stools 21

Deluxe Class 100 Chairs 27

Class 100 Chairs 28

Deluxe Class 1000 Chairs 29

Class 1000 Chairs 31

Deluxe Vacuum Formed Chairs with Arms 33

Deluxe Vacuum Formed Chairs 34

Vacuum Formed Chairs 35

Vacuum Formed Stools 37

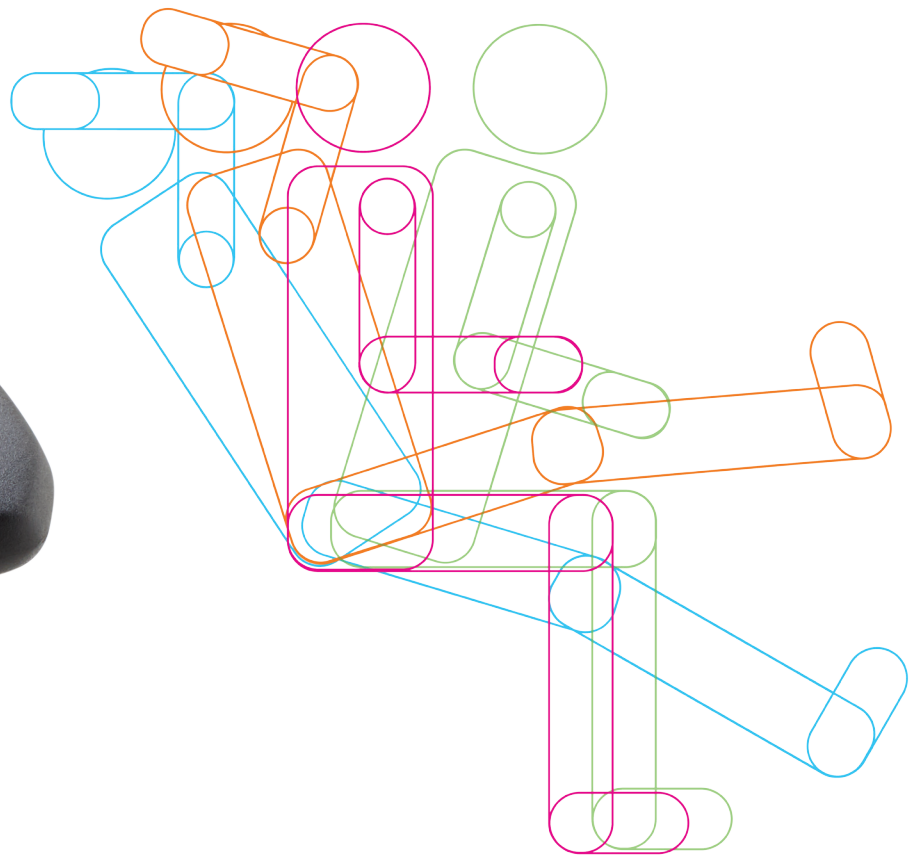
Poly Chairs 38

Footrest 39




VWR® CONTOUR™ SEATING COLLECTION





The VWR Mesh Back Contour office chair is the very young, very ergonomic solution for the new generation of office swivel chairs: refreshing with its design options, transparent in its design in each working area. As a result of its slim, athletic design, it invites you to be productive and also supports you effectively. The Contour Mesh Back chair creates a space for athletic thinkers and advancing employees who like to make a difference and more.

- 
- A black ergonomic office chair is shown from a side profile. The chair features a high-back mesh seatback, a contoured seat cushion, and two adjustable armrests. The armrests have a central vertical support with a horizontal grip. The chair is mounted on a five-point base with casters. A blue horizontal bar is visible at the top of the frame.
- Intuitive control lever to adjust to your body weight.
 - Seat depth adjustment make it possible to individually adapt the chair.
 - Back height adjustment can be ideally adjusted to user.
 - Multiple adjustment of the seat in a forward direction helps to avoid a poor posture.
 - Height adjustable armrests to take the strain off the neck muscles.
 - Width variation for optimum-support.



VWR® Contour™ Mesh Back Office Chair*

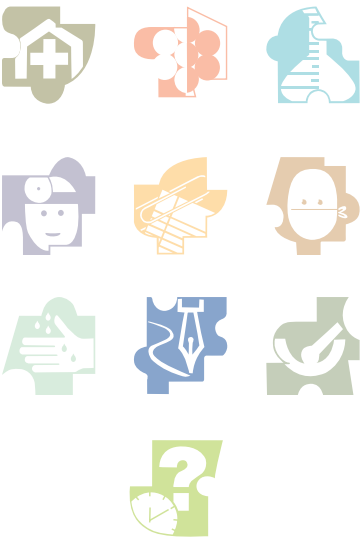
The VWR Contour Mesh Back office chair's design and adjustability will help you perform at your best. The urethane armrests are adjustable in height to take the strain off the neck muscles and width adjustable for optimum support. Polished aluminum base includes soft double casters for hard surface floors that resist movement when the chair is not occupied. Pneumatic seat height adjustment from 41cm (16") to 51cm (20"). The synchronous mechanism includes tilt lock, tension adjustment, seat slide and inclination adjustment. The ergonomic, black cloth upholstered seat measures 47cm (18.5") wide x 45.7cm (18") deep. Black mesh back has 10cm (4") of height adjustment and is 54.5cm (21½") high x 43cm (17") wide.

* VWR Contour Mesh Back Chairs ship within 10 days of order. Call 1-800-932-5000 for more information. All items are subject to availability at time of order. Large quantity orders may require longer lead times. Shipping time is based on immediate credit approval.

Description	Seat-Height Adjustment Range	Weight kg/lb	Cat. No.
Desk Height	41cm-51cm (16"-20")	18/40	10252-994



Ergonomic.
Fresh.
Versatile.
Enjoy the
comfort.



VWR® Contour™ Office Chairs - CAL 133*

These VWR Contour office chairs are desk height chairs with black cloth or vinyl upholstery. The Manager's backrest is 46W x 48H cm (18" x 19") and the Administrator's backrest is 39W x 37H cm (15½" x 14½"). Both backrests have lumbar support and contoured-foam. The chairs also come standard with a 66cm (26") diameter composite base and dual wheel casters. Armrests are both height and width adjustable with self-skinned urethane arm pads. The executive style seat control is standard with pneumatic seat height adjustment of 43-56 cm (17"-22"), forward tilt control, backrest-height adjustment, seat and backrest swivel/tilt in unison, tilt tension control and single lever seat-tilt lock in any position. The generous seats are 53W x 48D x 8T cm (21 x 19 x 3") and include a waterfall front edge as well as contoured-foam. Meet California Technical Bulletin 133 requirements.

* VWR Contour Lab Chairs ship within 72 hours of order. VWR Contour Lab Chairs meeting CAL 133 ship within 5 days of order. Call 800.932.5000 for more information. VWR Contour Office Chairs ship within 5 days of order. All items are subject to availability at time of order. Large quantity orders may require longer lead times. Shipping time is based on immediate credit approval.

Description	Seat-Height Adjustment Range	Weight kg/lb.	Cat. No.
Vinyl			
Administrator	43cm-56cm (17"-22")	18.6/41	97005-935
Manager	43cm-56cm (17"-22")	20/44	97005-937
Cloth			
Administrator	43cm-56cm (17"-22")	18.6/41	97005-939
Manager	43cm-56cm (17"-22")	20/44	97005-941

Contour CAL133
Ship in 5 days

VWR Contour
Office Chairs
with Arms -
CAL 133
& Upholstered

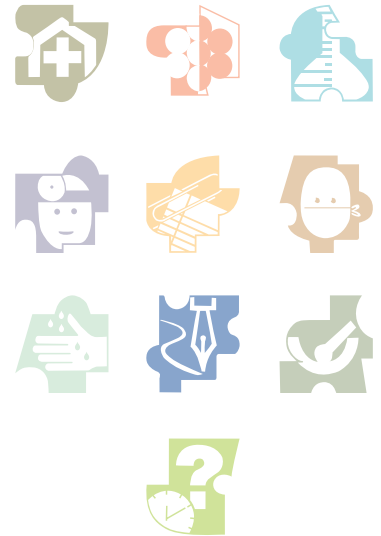


VWR® Contour™ Office Chairs

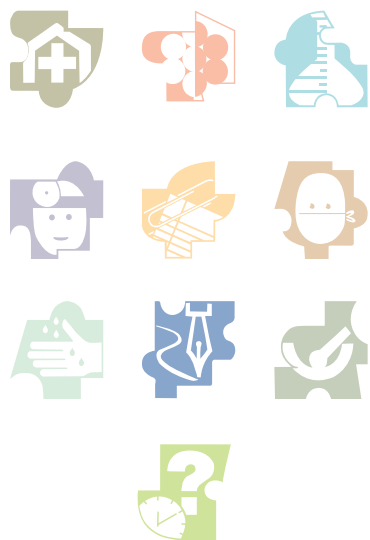
These VWR Contour office chairs are desk height chairs with black cloth or vinyl upholstery. The Manager's backrest is 46W x 48H cm (18" x 19") and the Administrator's backrest is 39W x 37H cm (15½" x 14½"). Both backrests have lumbar support and contoured-foam. The chairs also come standard with a 66cm (26") diameter composite base and dual wheel casters. Armrests are both height and width adjustable with self-skinned urethane arm pads. The executive style seat control is standard with pneumatic seat height adjustment of 43-56 cm (17"-22"), forward tilt control, backrest-height adjustment, seat and backrest swivel/tilt in unison, tilt tension control and single lever seat-tilt lock in any position. The generous seats are 53W x 48D x 8T cm (21 x 19 x 3") and include a waterfall front edge as well as contoured-foam. Meet California Technical Bulletin 117 requirements.

* VWR Contour Lab Chairs ship within 72 hours of order. VWR Contour Lab Chairs meeting CAL 133 ship within 5 days of order. Call 800.932.5000 for more information. VWR Contour Office Chairs ship within 5 days of order. All items are subject to availability at time of order. Large quantity orders may require longer lead times. Shipping time is based on immediate credit approval.

Description	Seat-Height Adjustment Range	Weight kg/lb.	Cat. No.
Vinyl			
Administrator	43cm-56cm (17"-22")	18.6/41	97004-033
Manager	43cm-56cm (17"-22")	20/44	97004-035
Cloth			
Administrator	43cm-56cm (17"-22")	18.6/41	14555-357
Manager	43cm-56cm (17"-22")	20/44	14555-359



VWR Contour
Upholstered
**OFFICE
CHAIRS**



VWR Contour
Deluxe Lab
Chairs with Arms
SUPPORT the
forearm and
wrist.

VWR® Contour™ Deluxe Lab Chairs with Arms*

The VWR Contour deluxe lab chair with arms has self-skinned urethane, adjustable-height armrests along with all of the other features of our Deluxe Lab Chairs. Look for standard black vinyl upholstery, a 66cm (26") diameter composite base, pneumatic seat-height adjustment, backrest tilt, 47W x 42D cm with 7.6cm thick (18 1/2 x 16 1/2 x 3") contoured-foam cushioned seats, and larger 39.4W x 36.8H cm (15 1/2 x 14 1/2") backrest with kidney support. Meet California Technical Bulletin 117 requirements. Medium bench height and high bench height chairs also have a 50.8cm (20") diameter adjustable-height footring.

* VWR Contour Lab Chairs ship within 72 hours of order. VWR Contour Lab Chairs meeting CAL 133 ship within 5 days of order. Call 800.932.5000 for more information. VWR Contour Office Chairs ship within 5 days of order. All items are subject to availability at time of order. Large quantity orders may require longer lead times. Shipping time is based on immediate credit approval.

Description	Seat-Height Adjustment Range	Weight kg/lb.	Cat. No.
Vinyl			
Desk Height	43.2cm-55.9cm (17"-22")	17.7/39	80092-457
Medium Bench Height	53.3cm-71.1cm (21"-28")	19.5/43	80092-459
High Bench Height	53.3cm-78.7cm (21"-31")	19.5/43	80092-461
Cloth			
Desk Height	43.2cm-55.9cm (17"-22")	17.7/39	97056-557
Medium Bench Height	53.3cm-71.1cm (21"-28")	19.5/43	97056-559
High Bench Height	53.3cm-78.7cm (21"-31")	19.5/43	97056-561

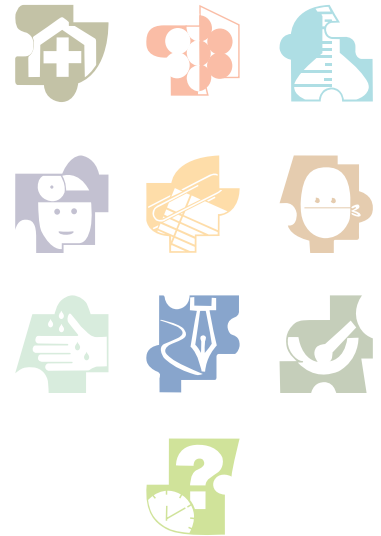


VWR® Contour™ Deluxe Lab Chairs*

The VWR Contour deluxe lab chair offers black vinyl upholstery and features a 66cm (26") diameter composite base, pneumatic seat-height adjustment, backrest tilt, 47W x 42D cm with 7.6cm thick (18½ x 16½ x 3") contoured-foam cushioned seat, and larger 39.4W x 36.8H cm (15½ x 14½") backrest with kidney support. Meet California Technical Bulletin 117 requirements. Medium bench height and high bench height chairs also have a 50.8cm (20") diameter adjustable-height footring.

* VWR Contour Lab Chairs ship within 72 hours of order. VWR Contour Lab Chairs meeting CAL 133 ship within 5 days of order. Call 800.932.5000 for more information. VWR Contour Office Chairs ship within 5 days of order. All items are subject to availability at time of order. Large quantity orders may require longer lead times. Shipping time is based on immediate credit approval.

Description	Seat-Height Adjustment Range	Weight kg/lb.	Cat. No.
Vinyl			
Desk Height	43.2cm-55.9cm (17"-22")	14.1/31	80086-417
Medium Bench Height	53.3cm-71.1cm (21"-28")	15.9/35	80086-419
High Bench Height	53.3cm-78.7cm (21"-31")	15.9/35	80086-421
Cloth			
Desk Height	43.2cm-55.9cm (17"-22")	14.1/31	97056-545
Medium Bench Height	53.3cm-71.1cm (21"-28")	15.9/35	97056-547
High Bench Height	53.3cm-78.7cm (21"-31")	15.9/35	97056-549



Select
VWR
Contour
Deluxe Lab
Chairs for a
comfortable look
and feel.



VWR® Contour™ Upholstered Lab Chairs*

Our VWR Contour black vinyl upholstered lab chair is available in three seat-height adjustment ranges and features a 66cm (26") diameter composite base, pneumatic seat-height adjustment, backrest tilt, 47W x 42D cm with 7.6cm thick (18½ x 16½ x 3") contoured-foam cushioned seat, and 36.8W x 24.1H cm (14½ x 9½") backrest with kidney support. Meet California Technical Bulletin 117 requirements. Medium bench height and high bench height chairs also have a 50.8cm (20") diameter adjustable-height footring.

* VWR Contour Lab Chairs ship within 72 hours of order. VWR Contour Lab Chairs meeting CAL 133 ship within 5 days of order. Call 800.932.5000 for more information. VWR Contour Office Chairs ship within 5 days of order. All items are subject to availability at time of order. Large quantity orders may require longer lead times. Shipping time is based on immediate credit approval.

Description	Seat-Height Adjustment Range	Weight kg/lb.	Cat. No.
Vinyl			
Desk Height	43.2cm-55.9cm (17"-22")	13.2/29	80086-411
Medium Bench Height	53.3cm-71.1cm (21"-28")	15.1/33	80086-413
High Bench Height	53.3cm-78.7cm (21"-31")	15.4/34	80086-415
Cloth			
Desk Height	43.2cm-55.9cm (17"-22")	13.2/29	97056-539
Medium Bench Height	53.3cm-71.1cm (21"-28")	15.1/33	97056-541
High Bench Height	53.3cm-78.7cm (21"-31")	15.4/34	97056-543

Rely on VWR for
QUALITY
lab chairs.

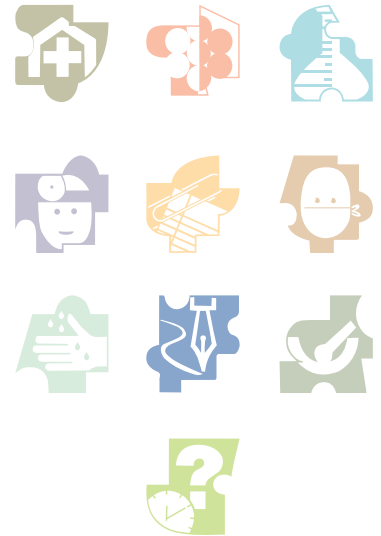


VWR® Contour™ Upholstered Stools*

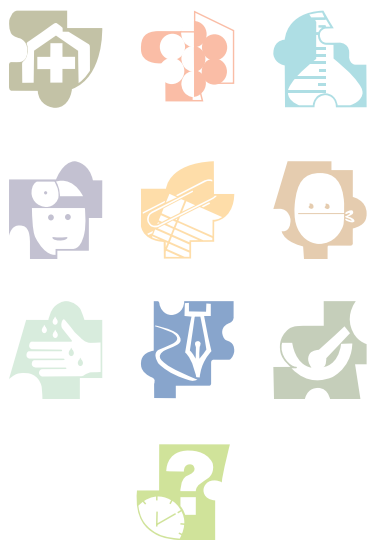
These three VWR Contour upholstered stools feature high-resilience foam to maintain their shape and support through hours of intense lab use. They have a 66cm (26") diameter composite base with casters, pneumatic seat-height adjustment, and a round, 40.64cm (16") diameter black vinyl upholstered seat. Meet California Technical Bulletin 117 requirements. They are available in desk, medium bench, and high bench heights. The medium and high bench heights feature a 50.8cm (20") diameter adjustable-height footring.

* VWR Contour Lab Chairs ship within 72 hours of order. VWR Contour Lab Chairs meeting CAL 133 ship within 5 days of order. Call 800.932.5000 for more information. VWR Contour Office Chairs ship within 5 days of order. All items are subject to availability at time of order. Large quantity orders may require longer lead times. Shipping time is based on immediate credit approval.

Description	Seat-Height Adjustment Range	Weight kg/lb.	Cat. No.
Vinyl			
Desk Height	43.2cm-55.9cm (17"-22")	9.5/21	80086-423
Medium Bench Height	53.3cm-71.1cm (20"-27")	11.3/25	80086-425
High Bench Height	53.3cm-78.7cm (22"-32")	11.8/26	80086-427
Cloth			
Desk Height	43.2cm-55.9cm (17"-22")	9.5/21	97056-551
Medium Bench Height	53.3cm-71.1cm (20"-27")	11.3/25	97056-553
High Bench Height	53.3cm-78.7cm (22"-32")	11.8/26	97056-555



VWR Contour Upholstered Stools hold their shape and offer comfort and support.



VWR® Contour™ Deluxe FFAC Lab Chairs with Arms*

The VWR Contour deluxe lab chairs with free-float articulating seat control and adjustable-height armrests with self-skinned urethane arms offer more ergonomic functions. The FFAC has pneumatic seat-height adjustment, backrest-height adjustment, and the seat and backrest tilt independently with separate levers and can free-float or lock into place. Look for standard black vinyl upholstery, a 66cm (26") diameter composite base, 47W x 42D cm with 7.6cm thick (18½ x 16½ x 3") contoured-foam cushioned seats and larger 39.4W x 36.8H cm (15½ x 14½") backrest with kidney support. Meet California Technical Bulletin 117 requirements. Medium bench height and high bench height chairs also have a 50.8cm (20") diameter adjustable-height footring.

* VWR Contour Lab Chairs ship within 72 hours of order. VWR Contour Lab Chairs meeting CAL 133 ship within 5 days of order. Call 800.932.5000 for more information. VWR Contour Office Chairs ship within 5 days of order. All items are subject to availability at time of order. Large quantity orders may require longer lead times. Shipping time is based on immediate credit approval.

Description	Seat-Height Adjustment Range	Weight kg/lb.	Cat. No.
Vinyl			
Desk Height	43.2cm-55.9cm (17"-22")	17.7/39	10147-207
Medium Bench Height	53.3cm-71.1cm (21"-28")	15.5/43	10147-209
High Bench Height	53.3cm-78.7cm (21"-31")	19.5/43	10147-211

VWR Contour
Deluxe Lab
Chairs with
FFAC and Arms
provide
ergonomic
support.

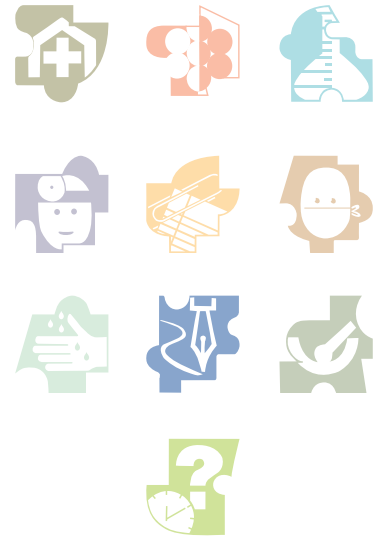


VWR® Contour™ Deluxe FFAC Lab Chairs*

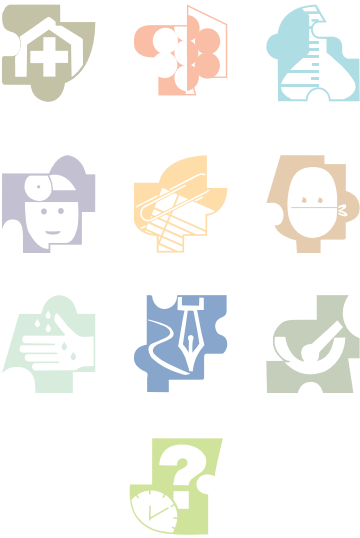
The VWR Contour deluxe lab chairs with free-float articulating seat control offer more ergonomic functions. The FFAC has pneumatic seat-height adjustment, backrest-height adjustment, and the seat and backrest tilt independently with separate levers and can free-float or lock into place. Look for standard black vinyl upholstery, a 66cm (26") diameter composite base, 47W x 42D cm with 7.6cm thick (18½ x 16½ x 3") contoured-foam cushioned seats and larger 39.4W x 36.8H cm (15½ x 14½") backrest with kidney support. Meet California Technical Bulletin 117 requirements. Medium bench height and high bench height chairs also have a 50.8cm (20") diameter adjustable-height footring.

* VWR Contour Lab Chairs ship within 72 hours of order. VWR Contour Lab Chairs meeting CAL 133 ship within 5 days of order. Call 800.932.5000 for more information. VWR Contour Office Chairs ship within 5 days of order. All items are subject to availability at time of order. Large quantity orders may require longer lead times. Shipping time is based on immediate credit approval.

Description	Seat-Height Adjustment Range	Weight kg/lb.	Cat. No.
Vinyl			
Desk Height	43.2cm-55.9cm (17"-22")	14.1/31	10152-753
Medium Bench Height	53.3cm-71.1cm (21"-28")	15.9/35	10152-755
High Bench Height	53.3cm-78.7cm (21"-31")	15.9/35	10152-746



Choose VWR
Deluxe Lab
Chairs with
**FREE-FLOAT
CONTROL**
for more
comfort.



VWR® Contour™ Deluxe Lab Chairs with Arms - CAL 133*

The VWR Contour deluxe lab chair with arms has self-skinned urethane, adjustable-height armrests along with all of the other features of our Deluxe Lab Chairs. Look for standard black vinyl upholstery, a 66cm (26") diameter composite base, pneumatic seat-height adjustment, backrest tilt, 47W x 42D cm with 7.6cm thick (18½ x 16½ x 3") contoured-foam cushioned seat, and larger 39.4W x 36.8H cm (15½ x 14½") backrest with kidney support. Meet California Technical Bulletin 133 requirements. Medium bench height and high bench height chairs also have a 50.8cm (20") diameter adjustable-height footring.

* VWR Contour Lab Chairs ship within 72 hours of order. VWR Contour Lab Chairs meeting CAL 133 ship within 5 days of order. Call 800.932.5000 for more information. VWR Contour Office Chairs ship within 5 days of order. All items are subject to availability at time of order. Large quantity orders may require longer lead times. Shipping time is based on immediate credit approval.

Description	Seat-Height Adjustment Range	Weight kg/lb.	Cat. No.
Vinyl			
Desk Height	43.2cm-55.9cm (17"-22")	17.7/39	14555-351
Medium Bench Height	53.3cm-71.1cm (21"-28")	19.5/43	14555-353
High Bench Height	53.3cm-78.7cm (21"-31")	19.5/43	14555-355
Cloth			
Desk Height	43.2cm-55.9cm (17"-22")	17.7/39	97056-581
Medium Bench Height	53.3cm-71.1cm (21"-28")	19.5/43	97056-583
High Bench Height	53.3cm-78.7cm (21"-31")	19.5/43	97056-585

Contour CAL133
Ship in 5 days

VWR Contour
Deluxe Lab
Chairs with Arms
- CAL 133



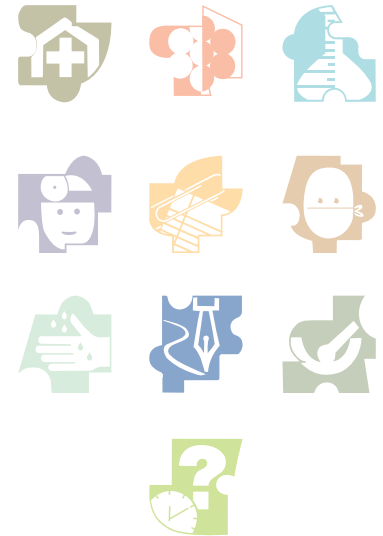
VWR® Contour™ Deluxe Lab Chairs - CAL 133*

The VWR Contour deluxe lab chair offers black vinyl upholstery and features a 66cm (26") diameter composite base, pneumatic seat-height adjustment, backrest tilt, 47W x 42D cm with 7.6cm thick (18½ x 16½ x 3") contoured-foam cushioned seat, and larger 39.4W x 36.8H cm (15½ x 14½") backrest with kidney support. Meet California Technical Bulletin 133 requirements. Medium bench height and high bench height chairs also have a 50.8cm (20") diameter adjustable-height footring.

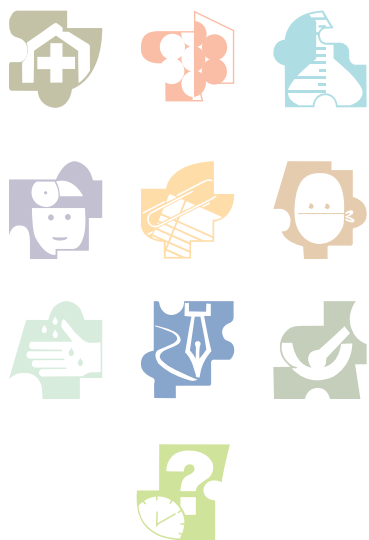
* VWR Contour Lab Chairs ship within 72 hours of order. VWR Contour Lab Chairs meeting CAL 133 ship within 5 days of order. Call 800.932.5000 for more information. VWR Contour Office Chairs ship within 5 days of order. All items are subject to availability at time of order. Large quantity orders may require longer lead times. Shipping time is based on immediate credit approval.

Description	Seat-Height Adjustment Range	Weight kg/lb.	Cat. No.
Vinyl			
Desk Height	43.2cm-55.9cm (17"-22")	14.1/31	14555-339
Medium Bench Height	53.3cm-71.1cm (21"-28")	15.9/35	14555-341
High Bench Height	53.3cm-78.7cm (21"-31")	15.9/35	14555-343
Cloth			
Desk Height	43.2cm-55.9cm (17"-22")	14.1/31	97056-569
Medium Bench Height	53.3cm-71.1cm (21"-28")	15.9/35	97056-571
High Bench Height	53.3cm-78.7cm (21"-31")	15.9/35	97056-573

Contour CAL133
Ship in 5 days



**VWR Contour
Deluxe
Lab Chairs
- CAL 133**



VWR® Contour™ Upholstered Lab Chairs - CAL 133*

Our VWR Contour black vinyl upholstered lab chair is available in three seat-height adjustment ranges and features a 66cm (26") diameter composite base, pneumatic seat-height adjustment, backrest tilt, 47W x 42D cm with 7.6cm thick (18½ x 16½ x 3") contoured-foam cushioned seat, and 36.8W x 24.1H cm (14½ x 9½") backrest with kidney support. Meet California Technical Bulletin 133 requirements. Medium bench height and high bench height chairs also have a 50.8cm (20") diameter adjustable-height footring.

* VWR Contour Lab Chairs ship within 72 hours of order. VWR Contour Lab Chairs meeting CAL 133 ship within 5 days of order. Call 800.932.5000 for more information. VWR Contour Office Chairs ship within 5 days of order. All items are subject to availability at time of order. Large quantity orders may require longer lead times. Shipping time is based on immediate credit approval.

Description	Seat-Height Adjustment Range	Weight kg/lb.	Cat. No.
Vinyl			
Desk Height	43.2cm-55.9cm (17"-22")	13.2/29	14555-333
Medium Bench Height	53.3cm-71.1cm (21"-28")	15/35	14555-335
High Bench Height	53.3cm-78.7cm (22"-32")	15.4/35	14555-337
Cloth			
Desk Height	43.2cm-55.9cm (17"-22")	13.2/29	97056-563
Medium Bench Height	53.3cm-71.1cm (21"-28")	15/35	97056-565
High Bench Height	53.3cm-78.7cm (21"-31")	15.4/35	97056-567

Contour CAL133
Ship in 5 days



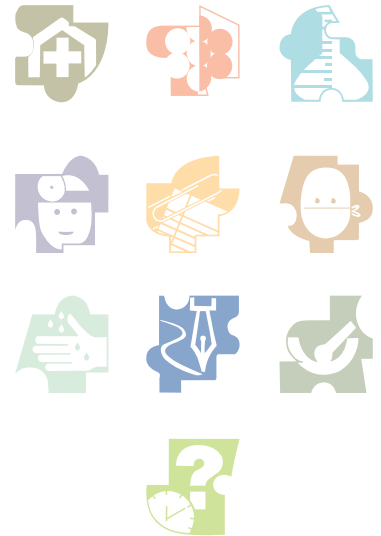
VWR Contour
Upholstered
Lab Chairs
- CAL 133

VWR® Contour™ Upholstered Stools - CAL 133*

These three VWR Contour upholstered stools feature high-resilience foam to maintain their shape and support through hours of intense lab use. They have a 66cm (26") diameter composite base with casters, pneumatic seat-height adjustment, and a round, 40.64cm (16") diameter black vinyl upholstered seat. Meet California Technical Bulletin 133 requirements. They are available in desk, medium bench, and high bench heights. The medium and high bench heights feature a 50.8cm (20") diameter adjustable-height footring.

* VWR Contour Lab Chairs ship within 72 hours of order. VWR Contour Lab Chairs meeting CAL 133 ship within 5 days of order. Call 800.932.5000 for more information. VWR Contour Office Chairs ship within 5 days of order. All items are subject to availability at time of order. Large quantity orders may require longer lead times. Shipping time is based on immediate credit approval.

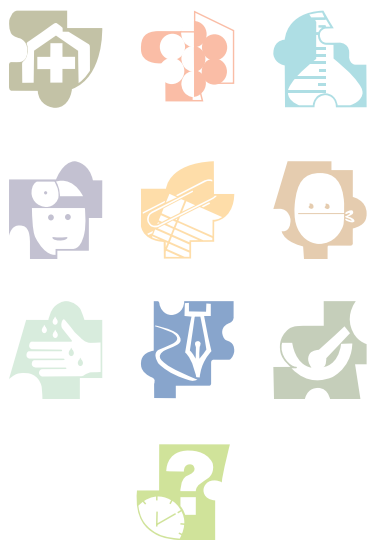
Description	Seat-Height Adjustment Range	Weight kg/lb.	Cat. No.
Vinyl			
Desk Height	43.2cm-55.9cm (17"-22")	9.5/21	14555-345
Medium Bench Height	53.3cm-71.1cm (21"-28")	11.3/25	14555-347
High Bench Height	53.3cm-78.7cm (21"-31")	11.8/26	14555-349
Cloth			
Desk Height	43.2cm-55.9cm (17"-22")	9.5/21	97056-575
Medium Bench Height	53.3cm-71.1cm (21"-28")	11.3/25	97056-577
High Bench Height	53.3cm-78.7cm (21"-31")	11.8/26	97056-579



Contour CAL133
Ship in 5 days



**VWR Contour
Upholstered
Stools -
CAL 133
& Upholstered**



VWR Contour
SELF-SKINNED
URETHANE
CHAIRS – chairs
that resist
moisture, stains
and damage.

VWR® Contour™ Self-Skinned Urethane Chairs*

These chairs feature a 66cm (26") diameter composite base, pneumatic seat-height adjustment, backrest tilt, 47W x 43.2D cm with 3.8cm thick (18½ x 17 x 1½") seat with ventilating ribs and waterfall front, and 41.9W x 31.7D cm (16½ x 12½") backrest also with ventilating ribs and integral lumbar support. Medium bench height and high bench height chairs also have a 50.8cm (20") diameter adjustable-height footring.

* VWR Contour Lab Chairs ship within 72 hours of order. VWR Contour Lab Chairs meeting CAL 133 ship within 5 days of order. Call 800.932.5000 for more information. VWR Contour Office Chairs ship within 5 days of order. All items are subject to availability at time of order. Large quantity orders may require longer lead times. Shipping time is based on immediate credit approval.

Description	Seat-Height Adjustment Range	Weight kg/lb.	Cat. No.
Vinyl			
Desk Height	38.1cm-50.8cm (15"-20")	13.4/34	80086-435
Medium Bench Height	48.3cm-66cm (19"-26")	17.7/39	80086-437
High Bench Height	48.3cm-73.7cm (19"-29")	17.7/39	80086-439

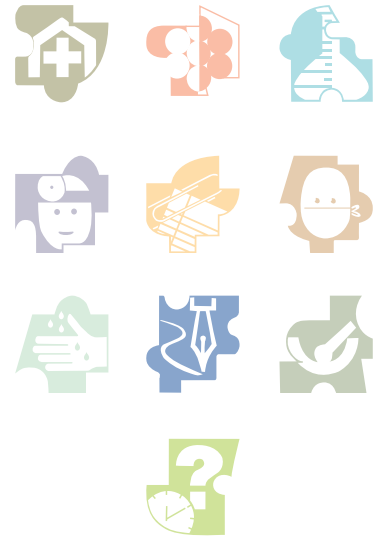


VWR® Contour™ Self-Skinned Urethane Stools*

These three VWR Contour lab stools feature a self-skinned urethane seat that has a 35.6cm (14") diameter and is flexible and nonmarking. They have a 66cm (26") diameter composite base with casters and pneumatic seat-height adjustment. They come in desk, medium bench, and high bench heights. The medium and high bench heights have a 50.8cm (20") diameter adjustable-height footring.

* VWR Contour Lab Chairs ship within 72 hours of order. VWR Contour Lab Chairs meeting CAL 133 ship within 5 days of order. Call 800.932.5000 for more information. VWR Contour Office Chairs ship within 5 days of order. All items are subject to availability at time of order. Large quantity orders may require longer lead times. Shipping time is based on immediate credit approval.

Description	Seat-Height Adjustment Range	Weight kg/lb.	Cat. No.
Vinyl			
Desk Height	38.1cm-50.8cm (15"-20")	10/22	80086-429
Medium Bench Height	48.3cm-66cm (19"-26")	11.8/26	80086-431
High Bench Height	48.3cm-73.7cm (19"-29")	12.2/27	80086-433



For a stool
that's **EASY**
TO CLEAN
and resistant
to stains and
damage,
CHOOSE
self-skinned
urethane.

VWR® CONTOUR™ SEATING COLLECTION

VWR® Contour™ Chairs with larger seats and backrests that are both office and lab compatible...now that is a definite plus! Available in both vinyl and cloth upholstery, with the larger seat and backrest availability along with the versatile control, these chairs are perfect for thinking and working!





Generous seat measuring
53W x 48D x 8T cm (21 x 19 x 3")
with waterfall edge and
contoured foam

VWR® Contour™ Chairs – Not Just for the Office

VWR® Contour™ Chairs That Meet More Than Just One Need



Contoured
Manager (Vinyl)



Contoured
Manager (Cloth)



- Generous seat measuring 53W x 48D x 8T cm (21 x 19 x 3") with waterfall edge and contoured foam
- Contoured Manager's backrest is 46W x 48H cm (18 x 19")
- Administrator's contoured backrest is 39W x 37H cm (15½ x 14½")
- Executive style control has forward tilt control, backrest-height adjustment, seat and backrest swivel/tilt in unison, and tilt
- Comfortable, height adjustable armrests, tension control, and more

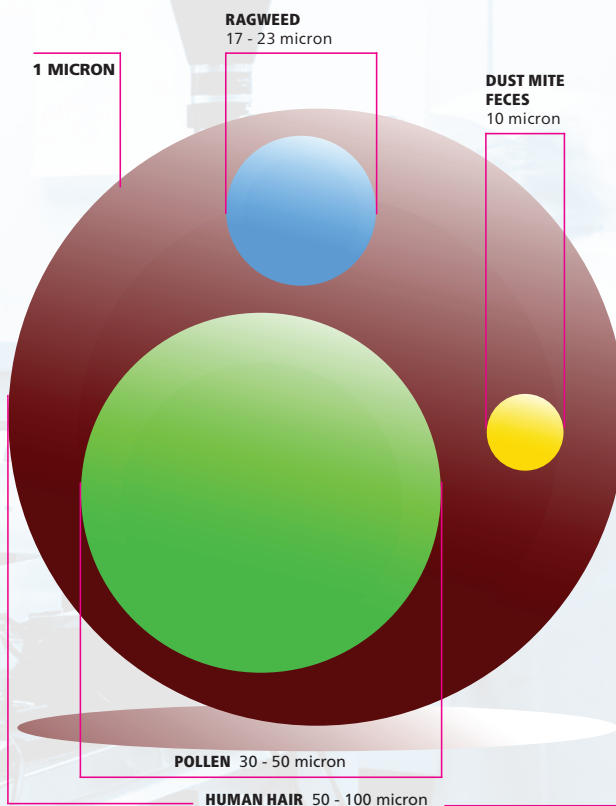
Administrator (Cloth)



Administrator (Vinyl)

VWR® Contour™ Deluxe and Standard Chairs are now available to meet Class 100 and 1000 cleanroom environments. Features still include an adjustable-height footing on the medium bench and high bench height chairs as well as the continued comfort of the contoured seats and backs.

How big is a micron?



Fed Std Class 1000

ISO Class 6 (1,000) .5 micron particles/cubic foot of air

Fed Std Class 100

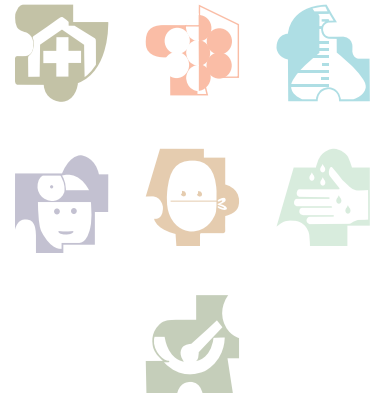
ISO Class 5 (100) .5 micron particles/cubic foot of air

VWR® Contour™ Deluxe Class 100 Chairs*

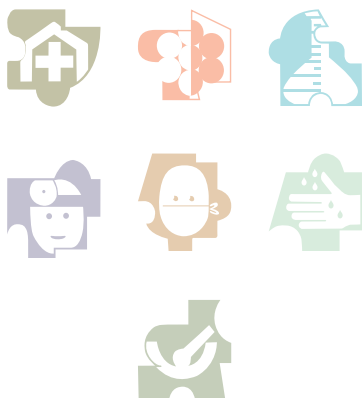
The VWR Contour deluxe Class 100 chair offers black vinyl upholstery and features a 58.42cm (23") diameter cast aluminum base with casters, pneumatic seat-height adjustment, backrest tilt, 47W x 42D cm with 7.6cm thick (18½ x 16½ x 3") contoured-foam cushioned seat, and larger 39.4W x 36.8H cm (15½ x 14½") backrest with kidney support. Meet California Technical Bulletin 117 requirements. Medium bench height and high bench height chairs also have a 50.8cm (20") diameter adjustable-height footring.

* VWR Contour Class 100 Chairs ship within 72 hours of order. Call 1-800-932-5000 for more information. All items are subject to availability at time of order. Large quantity orders may require longer lead times. Shipping time is based on immediate credit approval.

Description	Seat-Height Adjustment Range	Weight kg/lb.	Cat. No.
Vinyl			
Desk Height	43.2cm-55.9cm (17"-22")	14.1/31	89413-161
Medium Bench Height	53.3cm-71.1cm (21"-28")	15.9/35	89413-163
High Bench Height	53.3cm-78.7cm (21"-31")	15.9/35	89413-165



**VWR
Contour
Deluxe Class
100 Chairs**
provide comfort
for your
controlled
environment.



VWR® Contour™ Class 100 Chairs*

Our VWR Contour Class 100 chair with black vinyl is available in three seat-height adjustment ranges and features a 58.42cm (23") diameter cast aluminum base with casters, pneumatic seat-height adjustment, backrest tilt, 47W x 42Dcm with 7.6cm thick (18½ x 16½ x 3") contoured-foam cushioned seat, and 36.8W x 24.1Hcm (14½ x 9½") backrest with kidney support. Meet California Technical Bulletin 117 requirements. Medium bench height and high bench height chairs also have a 50.8cm (20") diameter adjustable-height footring.

* VWR Contour Class 100 Chairs ship within 72 hours of order. Call 1-800-932-5000 for more information. All items are subject to availability at time of order. Large quantity orders may require longer lead times. Shipping time is based on immediate credit approval.

Description	Seat-Height Adjustment Range	Weight kg/lb.	Cat. No.
Vinyl			
Desk Height	43.2cm-55.9cm (17"-22")	14.1/31	89413-155
Medium Bench Height	53.3cm-71.1cm (21"-28")	15.9/35	89413-157
High Bench Height	53.3cm-78.7cm (21"-31")	15.9/35	89413-159

RELY on
VWR for quality
Class 100 clean
room chairs.



VWR® Contour™ Deluxe Class 1000 Chairs*

The VWR Contour deluxe class 1000 chair offers black vinyl upholstery and features a 66cm (26") diameter composite base, pneumatic seat-height adjustment, backrest tilt, 47W x 42D cm with 7.6cm thick (18½ x 16½ x 3") contoured-foam cushioned seat includes a vinyl underwrap with filter media that covers the exhaust ports and larger 39.4W x 36.8H cm (15½ x 14½") backrest with kidney support. Meet California Technical Bulletin 117 requirements. Medium bench height and high bench height chairs also have a 50.8cm (20") diameter adjustable-height footring.

* VWR Contour Class 1000 Chairs ship within 72 hours of order. Call 1-800-932-5000 for more information. All items are subject to availability at time of order. Large quantity orders may require longer lead times. Shipping time is based on immediate credit approval.

Description	Seat-Height Adjustment Range	Weight kg/lb.	Cat. No.
Vinyl			
Desk Height	43.2cm-55.9cm (17"-22")	14.1/31	89399-893
Medium Bench Height	53.3cm-71.1cm (21"-28")	15.9/35	89399-895
High Bench Height	53.3cm-78.7cm (21"-31")	15.9/35	89399-897



VWR Contour
Deluxe Class
1000 Chairs
PROVIDE
COMFORT for
your controlled
environment.

VWR® CONTOUR™ SEATING COLLECTION

The VWR® Contour™ line of lab and office seating can enhance the comfort and well-being of your employees. These ergonomic chairs are able to adapt and support posture changes quickly and easily, helping to prevent premature fatigue and muscle strain. Varying seat height ranges, arm rests and lumbar support help to complete your ergonomic package. See for yourself what these chairs can do to make your employees' jobs healthier and more comfortable.

- Chair foundations made of furniture-grade plywood
- Highest quality base material
- No holes or gaps
- Super strong
- T-nuts provide a metal-to-metal fastening, no stripping out

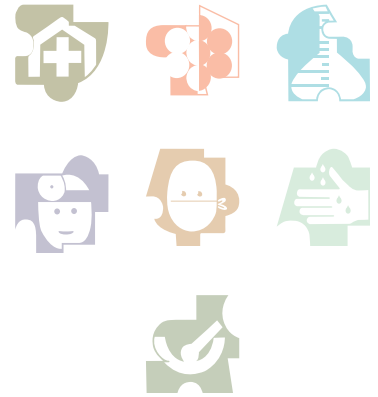
Back panel is injection molded and 50% thicker for strength, durability and long wear

VWR® Contour™ Class 1000 Chairs*

Our VWR Contour black vinyl upholstered class 1000 chair is available in three seat-height adjustment ranges and features a 66cm (26") diameter composite base, pneumatic seat-height adjustment, backrest tilt, 47W x 42D cm with 7.6cm thick (18½ x 16½ x 3") contoured-foam cushioned seat includes a vinyl underwrap with filter media that covers the exhaust ports, and 36.8W x 24.1H cm (14½ x 9½") backrest with kidney support. Meet California Technical Bulletin 117 requirements. Medium bench height and high bench height chairs also have a 50.8cm (20") diameter adjustable-height footring.

* VWR Contour Class 1000 Chairs ship within 72 hours of order. Call 1-800-932-5000 for more information. All items are subject to availability at time of order. Large quantity orders may require longer lead times. Shipping time is based on immediate credit approval.

Description	Seat-Height Adjustment Range	Weight kg/lb.	Cat. No.
Vinyl			
Desk Height	43.2cm-55.9cm (17"-22")	14.1/31	89399-887
Medium Bench Height	53.3cm-71.1cm (21"-28")	15.9/35	89399-889
High Bench Height	53.3cm-78.7cm (21"-31")	15.9/35	89399-891



RELY on
VWR for quality
Class 100 clean
room chairs.

VWR® Contour™ Deluxe Vacuum Formed Chairs

There is simply no substitute for a durable, ergonomically correct chair, scientifically designed & independently tested to meet the most demanding standards for use in any environment.

- Ergonomic design provides increased comfort, minimizes fatigue, maximizes productivity
- Built for durability, long life & extensive use
- 5-year warranty [Lifetime on pneumatic cylinders] ensures your investment for long life
- LEED® Compliant, qualify for Green Building Credits
- Meet and/or exceed ANSI/BIFMA standards

These vacuum-formed chairs help protect users from musculo-skeletal disorders and repetitive motion injuries while aiding performance and productivity.



Advanced vinyl protects against bacterial & fungal micro-organisms

Seamless style reduces risk of bacterial & fluid infiltration

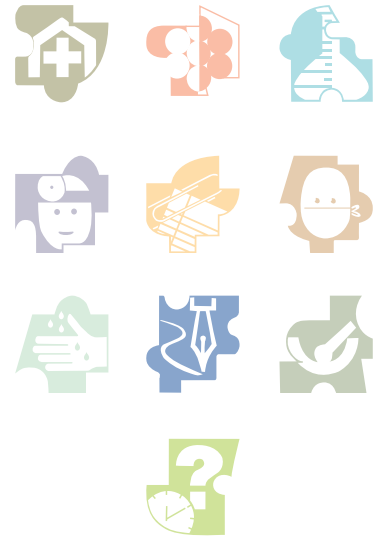
Contoured foam provides durability, comfort, long life

VWR® Contour™ Deluxe Vacuum Formed Chairs with Arms*

The VWR Contour Deluxe vacuum formed chair with arms has self-skinned urethane, adjustable-height armrests along with all of the other features of our deluxe vacuum formed chairs. Look for the seamless blue vinyl upholstery, a 66cm (26") diameter composite base, pneumatic seat-height adjustment, backrest tilt, 47W x 42D cm with 7.6cm thick (18½ x 16½ x 3") contoured-foam cushioned seats, and larger 39.4W x 36.8H cm (15½ x 14½") backrest with kidney support. Meet California Technical Bulletin 117 requirements. Medium bench height and high bench height chairs also have a 50.8cm (20") diameter adjustable-height footring.

* VWR Contour Vacuum Formed Chairs ship within 10 days of order. Call 800.932.5000 for more information. All items are subject to availability at time of order. Large quantity orders may require longer lead times. Shipping time is based on immediate credit approval.

Description	Seat-Height Adjustment Range	Weight kg/lb.	Cat. No.
Vinyl			
Desk Height	43.2cm-55.9cm (17"-22")	17.7/39	89178-277
Medium Bench Height	53.3cm-71.1cm (22"-32")	19.5/43	89178-279
High Bench Height	53.3cm-78.7cm (21"-28")	19.5/43	89178-281



Clinical directors
and discharge
planners will
**enjoy the
comfort.**



IDEAL FOR
nurses' stations,
pharmacy and
the ICU.

VWR® Contour™ Deluxe Vacuum Formed Chairs*

The VWR Contour deluxe vacuum formed chair offers seamless blue vinyl upholstery and features a 66cm (26") diameter composite base, pneumatic seat-height adjustment, backrest tilt, 47W x 42D cm with 7.6cm thick (18½ x 16½ x 3") contoured-foam cushioned seat, and larger 39.4W x 36.8H cm (15½ x 14½") backrest with kidney support. Meet California Technical Bulletin 117 requirements. Medium bench height and high bench height chairs also have a 50.8cm (20") diameter adjustable-height footring.

* VWR Contour Vacuum Formed Chairs ship within 10 days of order. Call 800.932.5000 for more information. All items are subject to availability at time of order. Large quantity orders may require longer lead times. Shipping time is based on immediate credit approval.

Description	Seat-Height Adjustment Range	Weight kg/lb.	Cat. No.
Vinyl			
Desk Height	43.2cm-55.9cm (17"-22")	14.1/31	89178-283
Medium Bench Height	53.3cm-71.1cm (21"-28")	15.9/35	89178-285
High Bench Height	53.3cm-78.7cm (21"-31")	15.9/35	89178-287

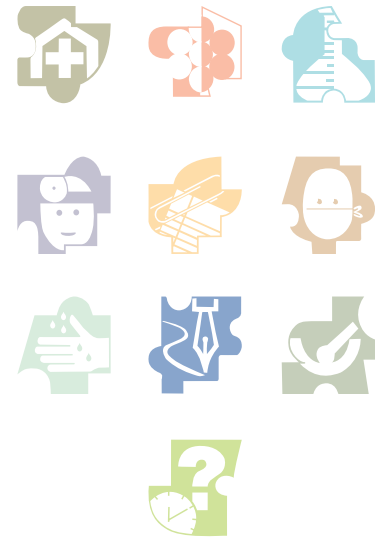


VWR® Contour™ Vacuum Formed Chairs*

Our VWR Contour vacuum formed chair with seamless blue vinyl is available in three seat-height adjustment ranges and features a 66cm (26") diameter composite base, pneumatic seat-height adjustment, backrest tilt, 47W x 42D cm with 7.6cm thick (18½ x 16½ x 3") contoured-foam cushioned seat, and 36.8W x 24.1H cm (14½ x 9½") backrest with kidney support. Meet California Technical Bulletin 117 requirements. Medium bench height and high bench height chairs also have a 50.8cm (20") diameter adjustable-height footring.

* VWR Contour Vacuum Formed Chairs ship within 10 days of order. Call 800.932.5000 for more information. All items are subject to availability at time of order. Large quantity orders may require longer lead times. Shipping time is based on immediate credit approval.

Description	Seat-Height Adjustment Range	Weight kg/lb.	Cat. No.
Vinyl			
Desk Height	43.2cm-55.9cm (17"-22")	14.2/29	89178-289
Medium Bench Height	53.3cm-71.1cm (20"-27")	15/33	89178-291
High Bench Height	53.3cm-78.7cm (22"-32")	15.4/34	89178-293



Ergonomic
with "ELBOW
ROOM" for
users including
nurses and
laboratory
technicians.



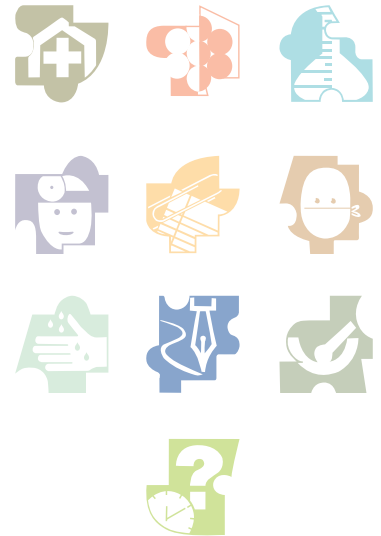
High-resilience
foams maintain
their shape and
evenly distribute
the employee's
weight for extreme
comfort 24/7

VWR® Contour™ Vacuum Formed Stools*

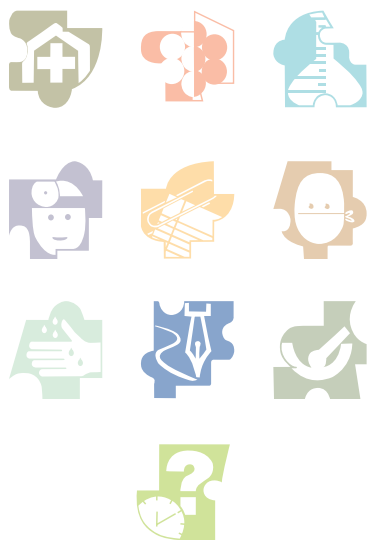
These three VWR Contour vacuum formed seamless blue vinyl upholstered stools feature high-resilience foam to maintain their shape and support through hours of intense lab use. They have a 66cm (26") diameter composite base with casters, pneumatic seat-height adjustment, and a round, 40.64cm (16") diameter blue vinyl upholstered seat. Meet California Technical Bulletin 117 requirements. They are available in desk, medium bench, and high bench heights. The medium and high bench heights feature a 50.8cm (20") diameter adjustable-height footring.

* VWR Contour Vacuum Formed Stools ship within 10 days of order. Call 800.932.5000 for more information. All items are subject to availability at time of order. Large quantity orders may require longer lead times. Shipping time is based on immediate credit approval.

Description	Seat-Height Adjustment Range	Weight kg/lb.	Cat. No.
Vinyl			
Desk Height	43.2cm-55.9cm (17"-22")	9.5/21	89201-111
Medium Bench Height	53.3cm-71.1cm (20"-27")	11.3/25	89201-113
High Bench Height	53.3cm-78.7cm (22"-32")	11.8/26	89201-115



Ideal for exam rooms, surgical suites, recovery—
anywhere
space is at a
PREMIUM.



Pathology and phlebotomy labs are just a few of the places these chairs will be APPRECIATED.

VWR® Contour™ Poly Chairs*

The VWR Contour Poly chairs are 100% polypropylene with anti-microbial properties as well as UV inhibitors integrated in the seat and backrest. They have a 66cm (26") diameter composite base with casters and pneumatic seat-height adjustment. The ergonomic seat is 44.45W x 39.37D cm (17½ x 15½") with waterfall front edge. The backrest measures 40.64W x 27.3H cm (16 x 10 ¾") and has lumbar support. Meets the requirements of UL 94 Horizontal Burning Test; HB. They are available in desk, medium bench, and high bench heights. The medium and high bench heights feature a 50.8cm (20") diameter adjustable-height footring.

* VWR Contour Poly Chairs ship within 10 days of order. Call 800.932.5000 for more information. All items are subject to availability at time of order. Large quantity orders may require longer lead times. Shipping time is based on immediate credit approval.

Description	Seat-Height Adjustment Range	Weight kg/lb.	Cat. No.
Blue			
Desk Height	43.2cm-55.9cm (17"-22")	14.5/32	89201-117
Medium Bench Height	53.3cm-71.1cm (18"-25")	16.3/36	89201-119
High Bench Height	53.3cm-78.7cm (19"-29")	16.3/36	89201-121
Black			
Desk Height	43.2cm-55.9cm (17"-22")	14.5/32	89205-925
Medium Bench Height	53.3cm-71.1cm (18"-25")	16.3/36	89205-927
High Bench Height	53.3cm-78.7cm (19"-29")	16.3/36	89205-929

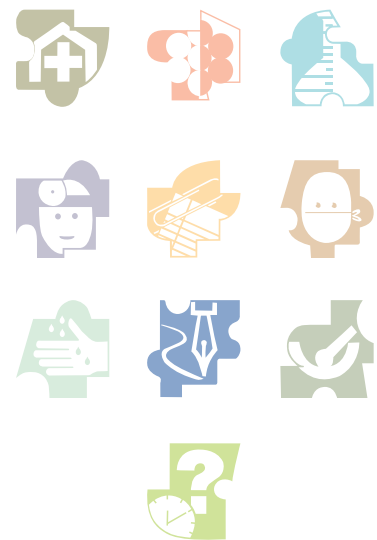


VWR® Contour™ Footrest

The VWR Contour Footrest provides a specific kind of support for the user's feet and legs for all day comfort. With an all black metal finish, the free-standing footrest is adjustable from 7.6cm (3") to 30cm (11") in height in 2.5cm (1") increments. Platform measures 50.8cm (20") wide x 25.4cm (11") deep with a 10 degree slope.

* VWR Contour Footrests ship within 10 days of order. Call 800.932.5000 for more information. All items are subject to availability at time of order. Large quantity orders may require longer lead times. Shipping time is based on immediate credit approval.

Description	Seat-Height Adjustment Range	Weight kg/lb.	Cat. No.
Adjustable	7.6cm-30cm (3"-11")	8.2/18	97035-500



Contour
FOOTREST

VWR® CONTOUR™ SEATING COLLECTION



1.800.932.5000 | vwr.com



Prices and product details are current when published; subject to change without notice. | Certain products may be limited by federal, state, provincial, or local regulations. | VWR makes no claims or warranties concerning sustainable/green products. Any claims concerning sustainable/green products are the sole claims of the manufacturer and not those of VWR International, LLC. All prices are in US dollars unless otherwise noted. Offers valid in US and Canada, void where prohibited by law or company policy, while supplies last. | VWR, the VWR logo and variations on the foregoing are registered (®) or unregistered trademarks and service marks, of VWR International, LLC and its related companies. All other marks referenced are registered by their respective owner(s). | Visit vwr.com to view our privacy policy, trademark owners and additional disclaimers. ©2016 VWR International, LLC. All rights reserved.