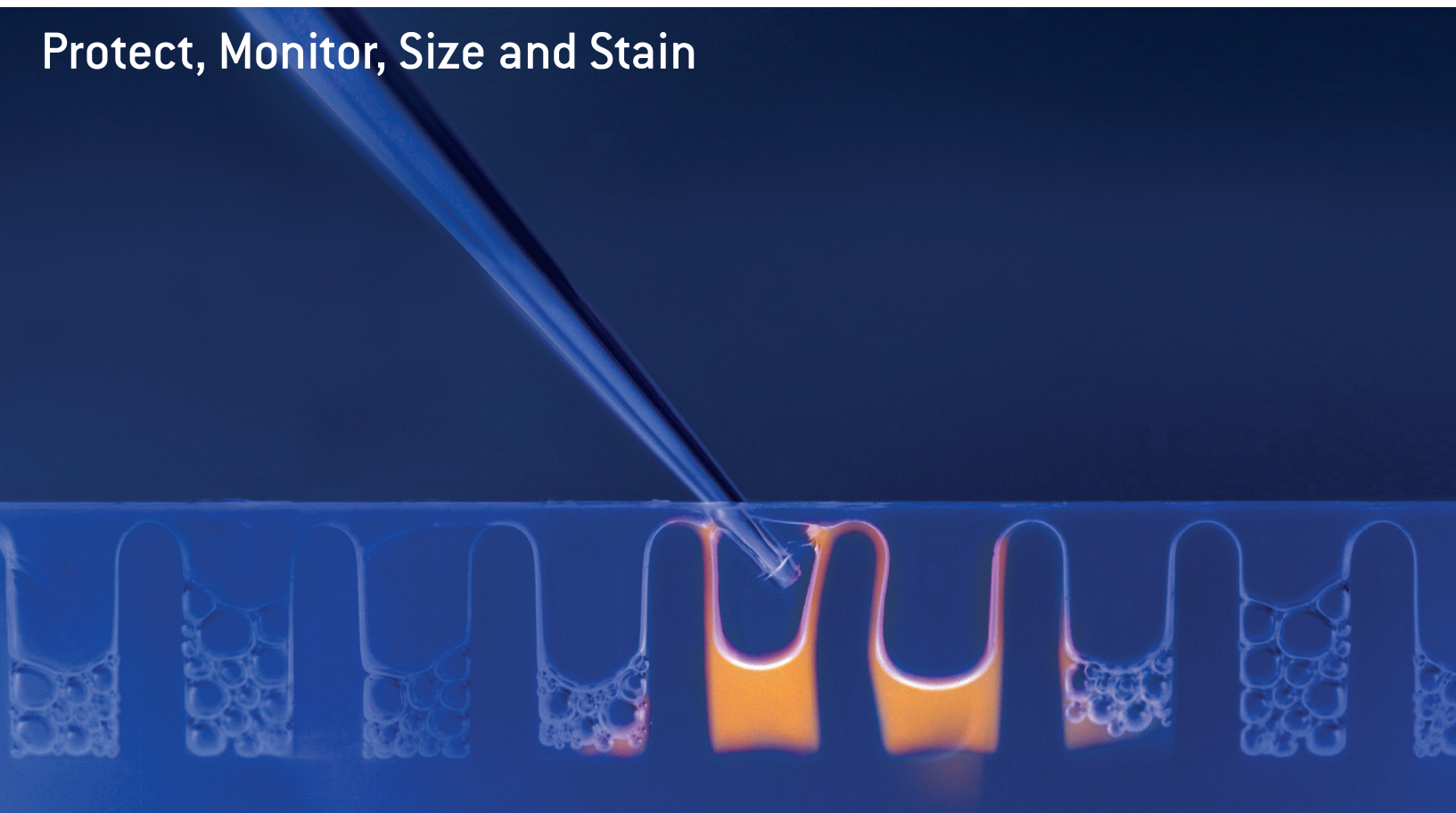


ProSieve® Protein Electrophoresis Reagents

Protect, Monitor, Size and Stain



Optimize your SDS-PAGE and Westerns with NEW ProSieve® Electrophoresis Reagents

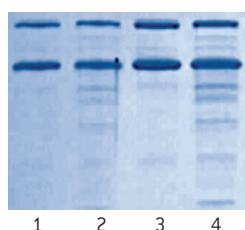
- **ProSieve® ProTrack™ Dual Color Protein Loading Buffer**
Protect and track protein samples during sample preparation, separation and blotting
- **ProSieve® QuadColor™ Protein Marker, 4.6 – 300 kDa**
Sharp colors to monitor separation and verify Western transfer
- **ProSieve® Unstained Protein Marker II**
Sharp, accurate sizing of proteins, 10 kDa to 200 kDa
- **ProSieve® Blue Protein Staining Solution**
Fast, sensitive, single-step staining

Learn more about our complete line of protein products, or request a sample at by calling your VWR Life Science Specialist.

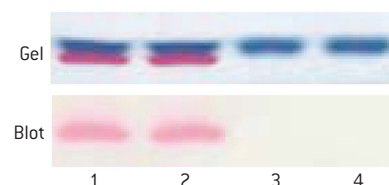
ProSieve® ProTrack™ Dual Color Protein Loading Buffer

Protect and track protein samples

- Protects proteins from degradation during sample prep
- Two colors for tracking electrophoresis progress (blue) and monitoring Western transfer (pink)
- Contains SDS and DTT for complete protein denaturing



Lanes 1 and 3 are proteins protected by ProSieve® ProTrack™ Dual Color Loading Buffer, Lanes 2 and 4 are proteins prepared and run in a standard loading buffer.



ProSieve® ProTrack™ Blue dye monitors protein separation on the gel, while the pink dye confirms transfer of the proteins onto the blot.

ProSieve® Color Protein Markers

Sharp colors to monitor separation and verify Western transfer

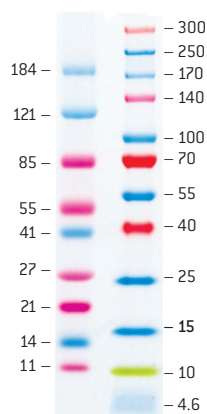
- Visually monitor protein separation in SDS-PAGE
- Verify protein transfer following Western blotting
- Sharp bands and intense, stable colors

ProSieve® Color Protein Marker, 10 – 190 kDa

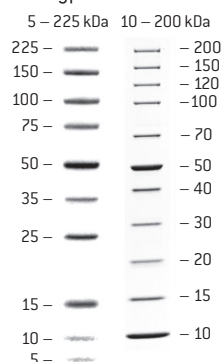
- 9 proteins (10, 15, 20, 25, 40, 50, 80, 125, 190 kDa)

ProSieve® QuadColor™ Protein Marker, 4.6 – 300 kDa

- 12 proteins (4.6, 10, 15, 25, 40, 55, 70, 100, 140, 170, 250 and 300 kDa)



Typical results



ProSieve® Unstained Protein Markers

Sharp, accurate protein sizing

- Sharp bands for accurate sizing of proteins in SDS-PAGE and Western blotting
- Markers contain an integral Strep-TAG® II sequence for direct detection on Western blots

ProSieve® Unstained Protein Marker, 5 – 225 kDa

- 10 proteins (5, 10, 15, 25, 35, 50, 75, 100, 150, 225 kDa)

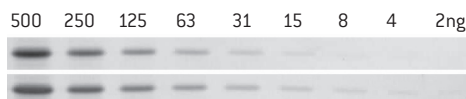
ProSieve® Unstained Protein Marker II, 10 – 200 kDa

- 11 proteins (10, 15, 20, 30, 40, 50, 70, 100, 120, 150, 200 kDa)

ProSieve® Blue Protein Staining Solution

Improved Coomassie dye

- Ready-to-use in a fast, 25 – 40 minute protocol
- No destaining required. Does not contain methanol or acetic acid
- Proteins stain to an endpoint, oversteining is not possible
- Detect 2 – 5 ng of protein
- Broad, linear dynamic range
- Can be reused up to 3 times without a decrease in sensitivity



Comparison of detection sensitivity between standard Coomassie Stain (upper bands) and ProSieve® Blue Protein Staining Solution (lower bands).

Contact Information

North America

Scientific Support: 800 521 0390 (toll-free)

Lonza Rockland, Inc.
Rockland, ME 04841

For Research Use Only. Not for use in diagnostic procedures.

ProSieve is a registered trademark of Lonza. Strep-TAG is a registered trademark of Institut fuer Bioanalytik Ltd. All other trademarks herein are marks of the Lonza Group or its affiliates. Strep-TAG® technology for protein purification and detection is covered by US patent 5,506,121, UK patent 2272698 and French patent 93 13 066. Strep-Tactin® is covered by US patent 6,103,493.

The information contained herein is believed to be correct and corresponds to the latest state of scientific and technical knowledge. However, no warranty is made, either expressed or implied, regarding its accuracy or the results to be obtained from the use of such information and no warranty is expressed or implied concerning the use of these products. The buyer assumes all risks of use and/or handling. No statement is intended or should be construed as a recommendation to infringe any existing patent.

Manufactured for Lonza.

© Copyright 2010, Lonza Rockland, Inc. All rights reserved.
FL-ProSieve 10/09 MB_AN012VWR



Prices, product appearance and specifications are current at the time of printing, subject to change without notice. Availability for certain products may be limited by federal, state, provincial or local licensing requirements. Any claims concerning sustainable/green products are the sole claims of the manufacturer and not those of VWR International, LLC. All prices are in U.S. dollars unless otherwise noted. Offers valid in USA and Canada, void where prohibited by law or company policy, while supplies last. Visit vwr.com to view our privacy policy and additional disclaimers.

VWR, forms of VWR and the VWR logo and/or design are either registered trademarks®, trademarks™, or service mark™ of VWR International, LLC in the United States and/or other countries. All other marks referenced herein are registered trademarks, trademarks or service marks of their respective owner(s). For a complete list of trademark owners, please visit vwr.com

© 2010 VWR International, LLC All Rights Reserved.
0410 Lit. No. POD 12034REV

Ordering information

Cat. No.	Description	Size
89125-520	ProSieve® ProTrack™ Dual Color Protein Loading Buffer	1000 loads of 20 µl
12001-806	ProSieve® Color Protein Marker, 10 – 190 kDa	50 loads of 10 µl
89125-526	ProSieve® QuadColor™ Protein Marker, 4.6 – 300 kDa	50 loads of 10 µl
12001-358	ProSieve® Unstained Protein Marker, 5 – 225 kDa	100 loads of 5 µl
89125-530	ProSieve® Unstained Protein Marker II, 10 – 200 kDa	100 loads of 5 µl
89125-522	ProSieve® Blue Protein Staining Solution	1L

Lonza